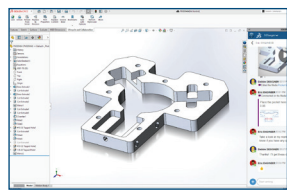


WHAT'S NEW IN SOLIDWORKS® 2025—DESIGN, COLLABORATION, AND DATA MANAGEMENT

All enhancements apply to 3DEXPERIENCE® SOLIDWORKS and SOLIDWORKS with Cloud Services unless stated otherwise.

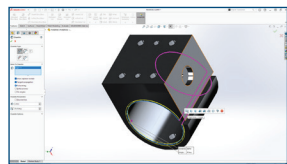


1 More Effective Collaboration and Data Management

- Connect and collaborate easily with industry peers by accessing communities directly from SOLIDWORKS.
- Stay up-to-date with real-time notifications, ensuring you always work with the latest file versions during collaborative design processes.
- Leverage your existing SOLIDWORKS PDM with 3DEXPERIENCE SOLIDWORKS.

Benefits

Deliver innovative products faster with improved collaboration and data management capabilities.

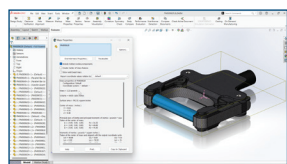


2 Greater Part Modeling Flexibility

- Boost efficiency by leveraging selection accelerators for the Chamfer command to rapidly select edges.
- Create smoother variable size fillets with an option to continuously blend fillet edges.
- Automatically create customizable bend notches on the flat pattern bend line of a sheet metal part.

Benefits

Create the exact geometry needed for your design more efficiently.

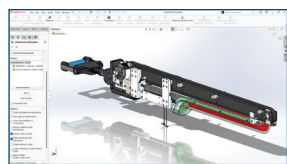


3 Boosted Performance

- Create a highly simplified part and make it associative to the parent part by using the Silhouette defeature method.
- Add a SpeedPak configuration at the top level of the assembly without needing to modify subassemblies.
- Accelerate the calculation of mass properties for assemblies with previously calculated values for parts and bodies.

Benefits

Boost design productivity through performance improvements.

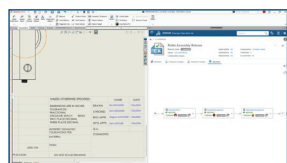


4 Faster Assembly Modeling

- Copy assembly components along with their associated advanced and mechanical mates.
- Detect interferences between surface bodies or surface and solid bodies.
- Detect interferences while in Large Design Review mode.

Benefits

Accelerate assembly design and ensure manufacturability.

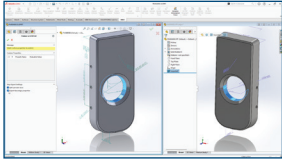


5 Improved Detailing of Drawings

- Enforce company rules with multi-approval stamps on drawings anytime, on any connected device.
- Easily access and view extended drawing attributes, including PLM properties.
- Choose whether to display the quantity for structural members in the BOM table as 'QUANTITY' or 'LENGTH x QUANTITY'.

Benefits

Reduce the need for manual workarounds and streamline drawing approval.

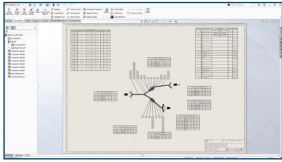


6 More Flexible 3D Dimensioning and Tolerancing

- Create DimXpert™ dimensions from sketch dimensions.
- Get DimXpert dimension support for drafted geometry.
- Communicate product manufacturing information (PMI) downstream with increased flexibility and control with the new Step 242 export settings.

Benefits

Enjoy faster, more flexible 3D dimensioning and tolerancing.

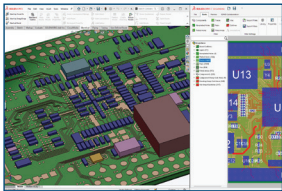


7 Improved Harness Board Drawings

- Improve the organization and positioning of tables and balloons on flattened drawings with refined auto-placement of tables, dimensions, balloons, and formats.
- Automatically update the electrical harness documentation after design changes.

Benefits

Create improved harness board drawings and documentation for manufacturing.



8 Streamlined ECAD/MCAD Collaboration and Design

- Import internal and external copper features including vias, traces, and shapes to SOLIDWORKS using IDX files.
- Enable more accurate mass, thermal, structural, shock, and electromagnetic analyses with access to more detailed copper trace information in the PCB.
- CircuitWorks is now available to all SOLIDWORKS users.

Benefits

Streamline the ECAD-MCAD collaboration process for a more complete PCB design and simulation workflow.

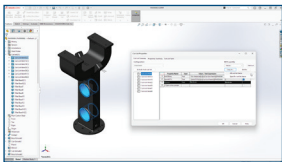


9 Improved Output With Immersive Rendering

- Automate the creation of photorealistic renderings by leveraging SOLIDWORKS Visualize with the SOLIDWORKS API.
- Take advantage of the latest advancements in GPU technology with real-time interactive ray tracing based on the open-standard Vulkan API for 3D graphics and computing.

Benefits

Create more compelling immersive content to inspire your customers.



10 User Experience Delighters

- Streamline the correction of sketches with broken relations and dimensions due to missing references with the ability to reattach broken sketch relations and dimensions.
- Create and copy the cut list property to specific cut list items, or to all cut list items in a model.
- Edit assemblies in Large Design Review mode faster with a breadcrumbs selection that makes the selection hierarchy clearer.

Benefits

Speed up design with improvements to usability.

Our 3DEXPERIENCE® platform powers our brand applications, serving 12 industries, and provides a rich portfolio of industry solution experiences.

Dassault Systèmes is a catalyst for human progress. We provide business and people with collaborative virtual environments to imagine sustainable innovations. By creating virtual twin experiences of the real world with our 3DEXPERIENCE platform and applications, our customers can redefine the creation, production and life-cycle-management processes of their offer and thus have a meaningful impact to make the world more sustainable. The beauty of the Experience Economy is that it is a human-centered economy for the benefit of all – consumers, patients and citizens. Dassault Systèmes brings value to more than 300,000 customers of all sizes, in all industries, in more than 150 countries. For more information, visit www.3ds.com.



3DEXPERIENCE®



Europe/Middle East/Africa
Dassault Systèmes
10, rue Marcel Dassault
CS 40501
78946 Vélizy-Villacoublay Cedex
France

Asia-Pacific
Dassault Systèmes
17F, Foxconn Building,
No. 1366, Lujiazui Ring Road
Pilot Free Trade Zone, Shanghai 200120
China

Americas
Dassault Systèmes
175 Wyman Street
Waltham, Massachusetts
02451-1223
USA